

DATE	REV.	REVISION RECORD	ECN #	DR.	CHK.
10-18-04	A	RELEASE & ISSUE	E04-121	LEG	
4-12-07	B	REVISED AND REDRAWN	E07-003	LEG	
9-12-07	C	ADDED AL & CMPR. CYL 3000 PSI	E07-098	LEG	<i>AL</i>

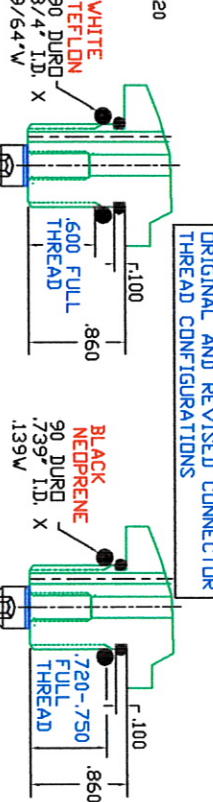
**FLOPAC REGULATOR CYLINDER INSTALLATION INSTRUCTION**

Note: THE FLOPAC HANDLE / FLANGE ASSEMBLY IS SUPPLIED PREASSEMBLED & PRE-TORQUED. NO DISASSEMBLY IS REQUIRED FOR INSTALLATION.

1. INSPECT FLOPAC CGA-XXX FILL PORT AND BURST DISC FOR CLEANLINESS AND DAMAGE PRIOR TO FLOPAC INSTALLATION.
2. PERFORM CYLINDER INSPECTION PER CGA ACCEPTED PRACTICES PRIOR TO FLOPAC INSTALLATION.
3. SECURE CYLINDER FIRMLY BEFORE VALVING FLOPAC TO CYLINDERS SIZE CC, CD, CE, CJ, CFA, CFB, CFC, CFD, CHB, CHC, CHD, CHE.
4. FLOPAC'S CONNECTOR THREADS ARE 3/4-16 STRAIGHT UNF.
5. REMOVE FLOPAC VALVING THREADS PROTECTIVE COVER, REMOVE LARGEST O-RING, (O-RING CLOSEST TO PROTECTIVE CAP), BUT DO NOT DISCARD BOTTOM TEFLON (WHITE) OR NEOPRENE (BLACK) O-RING. (SEE ENLARGED VIEW OF CONNECTOR WITH DIFFERENT LENGTH THREAD).
6. INSERT FLOPAC UNIT INTO AND THROUGH CENTER HANDLE-FLANGE HOLE. REINSTALL PREVIOUSLY REMOVED O-RING INTO THREADS BELOW HANDLE FLANGE AND THREAD ENTIRE ASSEMBLY UNTIL HAND-TIGHT ENSURING HANDLE-FLANGE WASHER AND FLOPAC BODY ARE SEATED AT 90 DEGREE PLANE AS DEPICTED IN PICTURE # 1.
7. USING FLOTEC SUPPLIED 1/2" DRIVE CROW'S FOOT OPEN-END TORQUING WRENCH HEAD INSERT OVER MANUAL PRESSURE SHUT-OFF KNOB EXTENDING WRENCH SLEEVE ARMS IN BETWEEN FLOPAC CONNECTOR BODY AND HANDLE POSTS. ENSURE THAT CONTACT IS AGAINST CONNECTOR BODY ONLY AND IS NOT MAKING CONTACT WITH REGULATOR BODY.
8. TORQUE ENTIRE HANDLE FLANGE ASSEMBLY TO 70 FT.LBS.

NOTE: DO NOT ATTEMPT TO LOOSEN EITHER TOP HEX NUTS OR BOTTOM BOLT ADAPTERS ON HANDLE FLANGE ASSEMBLY. HANDLE ARE SUPPLIED PRETORQUED TO THE FOLLOWING SPECIFICATIONS:

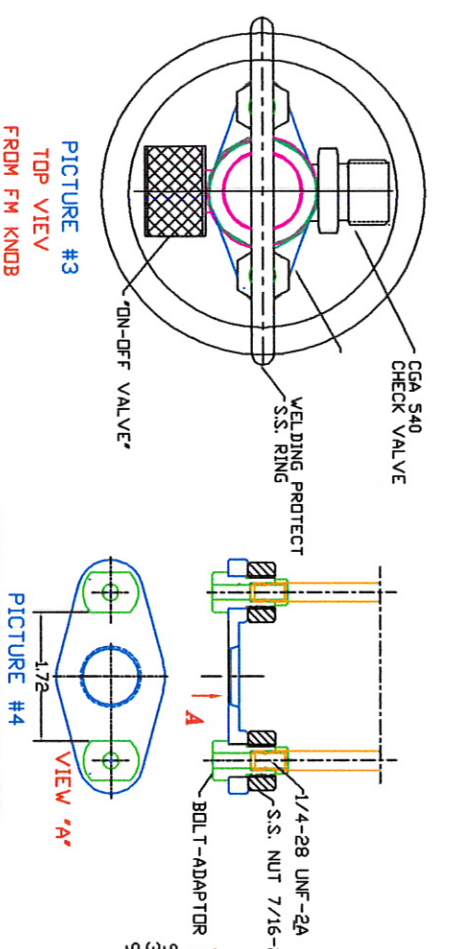
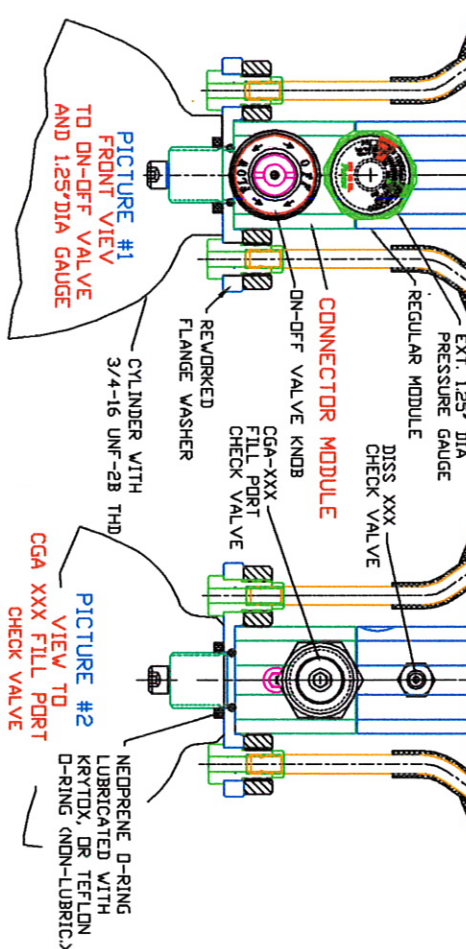
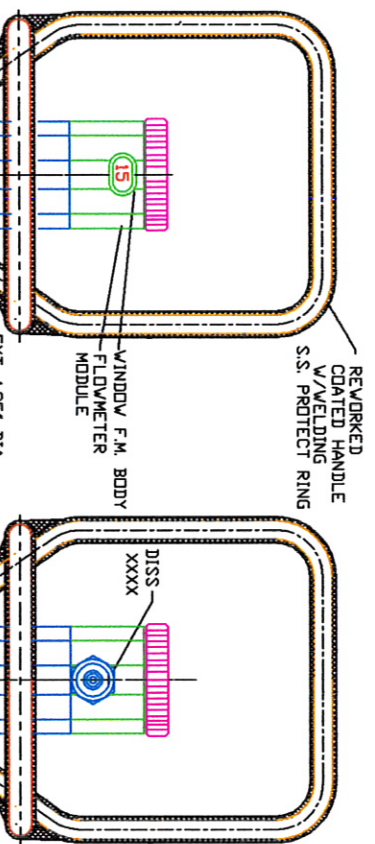
STAINLESS-STEEL HEX NUTS: 35 ft. lbs.  
 THREADED BOLT ADAPTERS: 5-8 ft. lbs.



REVISOR  
 CONNECTOR CONFIGURATION REQUIRES WHITE TEFLON, 90 DURO

ORIGINAL CONFIGURATION  
 CONNECTOR CONFIGURATION REQUIRES BLACK NEOPR., 90 DURO

SCALE 1.5:1



7625 West New York Street  
 Indianapolis, IN 46214-4911  
 317-273-6879, (Fax) 317-273-6979  
 E-mail: flotec@flotec2.com

**CONFIDENTIAL**  
 © 2004-07 FLOTEC, Inc.  
 INDIANAPOLIS, IN, USA  
 ALL RIGHTS RESERVED

**FLOTEC**

CAD # E	CAD FILE # 810-6960-001C	REF #	FPF, FPL	REV.
FLOPAC INSTALL INSTRUCTION	SHEET	DRAWING NUMBER		
FDR HANDLE WITH BOLT-ADAPTERS	1 OF 1	810-6960-001		C