

# FLOTEC INC

7625 West New York Street  
Indianapolis, Indiana 46214-4911  
Web Site: <http://www.floteco2.com>

317-273-6960  
Fax 317-273-6979

Order desk: 800-401-1723  
Order desk fax: 800-515-9254  
e-mail: [flotec@floteco2.com](mailto:flotec@floteco2.com)

## How to Order Flowmeter (RW Series)

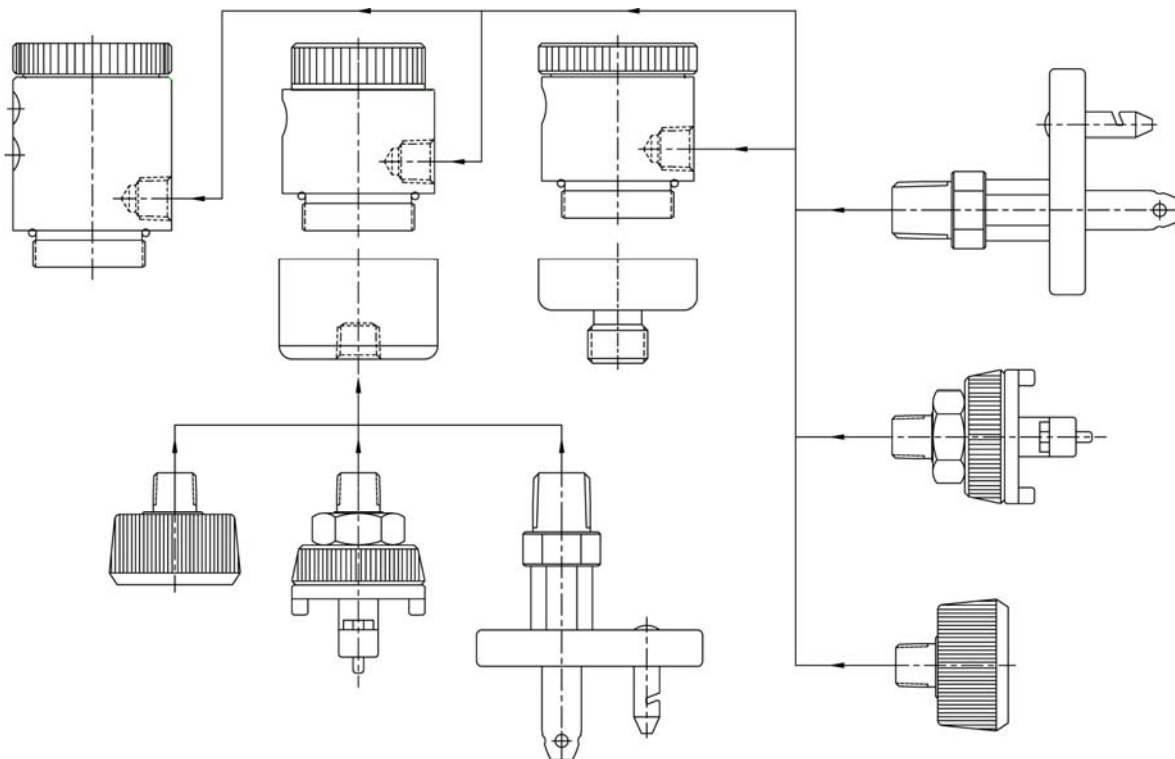
The Flotec Flowmeter consists of 2 modules, the cover and the flowmeter, which are threaded together to form the complete Flowmeter. To order it is necessary to SELECT and SPECIFY the features desired on each module. The R-FM Code is used to identify and select these features. Begin with the cover. Move across the list of options, select one from each section, and specify the code for that option. When finished, you will have an assembly number such as F10. This number, for example identifies a:

- F - Flowmeter
- 1 - DISS-1240 Solid Cover Outlet
- 0 - Cover Position on Centerline
- \_ - Color Option (if none use default)

Now move to the Flowmeter. Following the same procedure will produce an assembly number such as 3E0M7. This number, for example identifies a:

- 3 - Small Diameter Knurled Knob
- E - Window @ 0 degree radial & Ohio Style Oxygen Inlet @ 180 degree radial
- 0 - No Flow Cartridge Options
- \_ - Color Option (if none use default)
- M7 - 0 thru 15 LPM flow range (see B-Flows.123 for full selection of flow ranges)

Combining the two assembly numbers will provide a complete regulator part number such as ML800-280M2.



FLOW RANGE:

See B-Flows

chart for part

COLOR OPTION:

- NONE - Green Anodized Body
- 1 - Lt Blue Anodized Body
- 2 - Silver Anodized Body
- 4 - Yellow Anodized Body
- 5 - Blue Anodized Body
- 6 - Red Anodized Body
- 7 - Brown Anodized Body
- 8 - Gold Anodized Body
- 9 - Black Anodized Body
- A - Purple Anodized Body
- B - Orange Anodized Body
- G - Gold Plated Brass Body (No Aluminum)
- T - Tri-Metal Plated Brass Body (No Aluminum)

FLOW CARTRIDGE OPTIONS:

- 0 - No Flow Cartridge Options
- 2 - 2 Position
- 4 - 4 Position
- 7 - 7 Position
- 8 - 8 Position
- A - 20 PSI Outlet Pressure
- B - 250 PSI Outlet Pressure
- C - Clear Anodized Knob
- D - 30 PSI Outlet Pressure
- E - DISS-1240 Check Valve Tee Port
- F - 58 PSI Outlet Pressure
- G - DISS-1160 Check Valve Tee Port
- H - 24 PSI Outlet Pressure
- J - Long Flow Side Connector
- K - DISS-1240 Check Valve Tee Port Long
- L - DISS-1160 Check Valve Tee Port Long
- M - 10 PSI Outlet Pressure
- Q - 116 PSI Outlet Pressure (8 bar)
- S - Stainless Steel Body
- V - 17 PSI Outlet Pressure
- Y - Male Hansen Check Valve Tee Port
- Z - High Flow @ 70 PSI

FOR KNOB OPTIONS: 1, 2, 3, 4, 5, 7 and 8

WINDOW & CONTROLLED FLOW OUTLET POSITI

- 0 - Window @ 0 & Hose Barb @ 180
- 1 - Window @ 0 & DISS-1240 Fitting @ 180
- 2 - Window @ 0 & 1/8" Female Pipe Port (Oxygen) @ 180
- 3 - Window @ 0 & DISS-1240 Fitting @ 180 w/ 45 adapter
- 4 - Window @ 270 & Hose Barb @ 180
- 5 - Window @ 270 & DISS-1240 Fitting @ 180
- 6 - Window @ 270 & 1/8" Female Pipe Port @ 180
- 7 - Window @ 180 & Hose Barb @ 180
- 8 - Window @ 90 & Hose Barb @ 180
- 9 - Window @ 90 & DISS-1240 Fitting @ 180
- A - Window @ 90 & 1/8" Female Pipe Port @ 180
- B - Window @ 0 & Australian Female SIS for (Oxygen) @ 180
- C - Window @ 0 & DISS-1240 Nipple & Swivel Nut Inlet @ 180
- D - Window @ 0 & Ohio Style (Medical Air) Inlet @ 180
- E - Window @ 0 & Ohio Style (Oxygen) Inlet @ 180
- F - Window @ 0 & Chemetron Style (Medical Air) Inlet @ 180
- G - Window @ 0 & Chemetron Style (Oxygen) Inlet @ 180
- H - Window @ 0 & Clear Hose Barb Outlet @ 180
- J - Window @ 0 & Long Ohio Style (Oxygen) Inlet @ 180
- K - Window @ 0 & 1/8" Female BSPP @ 180
- L - Window @ 0 & DISS-1160 Nipple & Swivel Nut Inlet @ 180
- M - Window @ 0 & 1/8" Female Pipe Port (Medical Air) @ 180
- N - Window @ 90 & Chemetron Style (Oxygen) Inlet @ 180
- P - Window @ 0 & Puritan Bennett (Oxygen) Inlet @ 180
- Q - Window @ 0 & Oxequip Twist (Oxygen) Inlet @ 180
- R - Window @ 0 & BS5682 Probe (Oxygen) Inlet w/filter @ 180
- S - Window @ 90 & DISS-1240 Nipple & Swivel Nut Inlet @ 180
- T - Window @ 180 & DISS-1240 Fitting @ 180
- U - Window @ 270 & DISS-1240 Fitting @ 180 w/ 90 adapter
- V - Window @ 0 & Hose Barb @ 180 w/ 45 adapter
- W - Window @ 0 & Australian Female SIS for (Medical Air) @ 180
- Y - Window @ 270 & DISS-1240 Nipple & Swivel Nut Inlet @ 180
- Z - Window @ 180 & DISS-1240 Fitting @ 180 w/ 90 adapter

FOR KNOB OPTIONS: A, B, C, D, E, F and G

WINDOW & CONTROLLED FLOW OUTLET POSITIONS:

- 1 - Window @ 0 & Schrader Style (Oxygen) Inlet @ 180
- 2 - Window @ 0 & Medstar Style (Oxygen) Inlet @ 180
- 3 - Window @ 0 & Puritan Style (Medical Air) Inlet @ 180
- 4 - Window @ 0 & Schrader Style (Medical Air) Inlet @ 180
- 5 - Window @ 0 & Oxyquip Style (Medical Air) Inlet @ 180
- 6 - Window @ 0 & Medstar Style Medical Air Inlet @ 180
- 7 - Window @ 0 & DISS-1240 Nipple & Hex Nut Inlet @ 180
- 8 - Window @ 0 & DISS-1160 Nipple & Hex Nut Inlet @ 180
- 9 - Window @ 0 & French Female AFNOR (Oxygen) @ 180
- A - Window @ 0 & French Female AFNOR (Medical Air) @ 180
- B - Window @ 0 & DISS-1180 Nipple & Hex Nut Inlet @ 180
- C - Window @ 0 & German Male (DIN) (Oxygen) @ 180
- D - Window @ 60 & 1/8" Female Pipe Port (Oxygen) @ 180
- E - Window @ 300 & 1/8" Female Pipe Port (Oxygen) @ 180
- F - Window @ 270 & Ohio Style (Oxygen) Inlet @ 180

FLOW CARTRIDGE CONFIGURATION:

- 1 - Tang Knob
- 2 - Large Diameter Knurled Knob
- 3 - Small Diameter Knurled Knob
- 4 - Double Window Large Knurled Knob
- 5 - Shrouded Knob
- 7 - Large Diameter Knurled Knob (InGage Bc)
- 8 - Shrouded Knob (InGage Body)
- 6 - Cap
- A - Tang Knob
- B - Large Diameter Knurled Knob
- C - Small Diameter Knurled Knob
- D - Double Window Large Knurled Knob
- E - Shrouded Knob
- F - Large Diameter Knurled Knob (InGage Bc)
- G - Shrouded Knob (InGage Body)

COLOR OPTION:

- NONE - Green Anodized Body
- 1 - Lt Blue Anodized Body
- 2 - Silver Anodized Body
- 4 - Yellow Anodized Body
- 5 - Blue Anodized Body
- 6 - Red Anodized Body
- 7 - Brown Anodized Body
- 8 - Gold Anodized Body
- 9 - Black Anodized Body
- A - Purple Anodized Body
- B - Orange Anodized Body
- G - Gold Plated Brass Body (No Aluminum)
- T - Tri-Metal Plated Brass Body (No Aluminum)

COVER POSITION:

- 0 - Cover Position on Centerline
- 1 - Cover Position on Centerline with 2 Ports
- 2 - Cover Position on 0 Radial
- 3 - Cover Position on 90 Radial
- 6 - Cover Position on 180 Radial
- 9 - Cover Position on 270 Radial
- S - Stainless Steel Body, Cover Position on Centerline

COVER CONNECTIONS:

- 0 - Hose Barb Fitting
- 1 - DISS-1240 Solid Cover Outlet
- 2 - 1/8" Female Pipe Port Cover
- 3 - 1/4" Female Pipe Port Cover
- 4 - No Cover (1-1/16"-20 UN)
- 5 - DISS-1240 Nipple & Swivel Nut Inlet Cover
- 6 - Ohio Style Medical Air Inlet Cover
- 7 - Ohio Style Oxygen Inlet Cover
- 8 - Chemetron Style Medical Air Inlet Cover
- 9 - Chemetron Style Oxygen Inlet Cover
- A - DISS-1160 Fitting
- B - DISS-1240 Fitting
- C - DISS-1080 Fitting
- D - 1/8" Solid Male Pipe Cover
- E - DISS-1240 Solid Cover w/ HDB24 (Yellow)
- F - Hose Barb & 22mm Tube Solid Cover Outlet
- G - Australian Male SIS for Oxygen
- H - DISS-1060 Fitting
- J - Hose Barb Solid Cover Outlet
- N - DISS-1240 Solid Cover w/ HBD2 (Green)
- T - DISS-1120 Fitting
- W - Australian Male SIS for Medical Air

PRODUCT GROUP:

- F - Flowmeter