



## How to Order Flowmeter (RW Series)

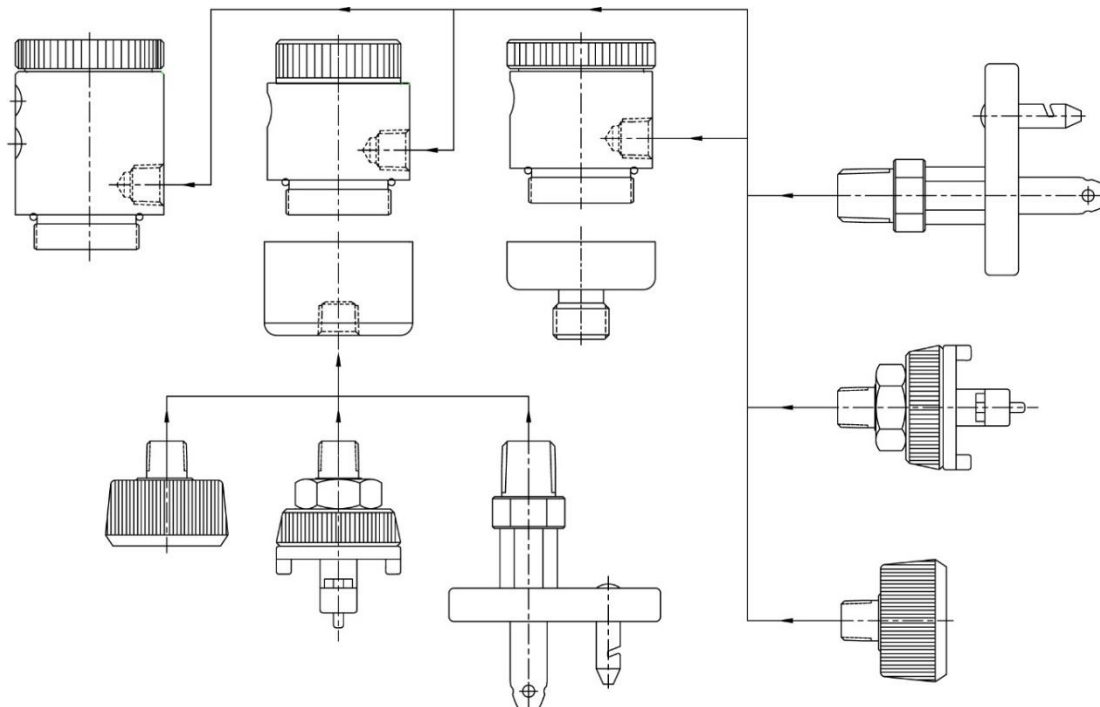
The Flotec Flowmeter consists of 2 modules, the cover and the flow cartridge, which are threaded together to form the complete Flowmeter. To order it is necessary to SELECT and SPECIFY the features desired on each module. The B- Flowmeter Code is used to identify and select these features. Begin with the cover. Move across the list of options, select one from each section, and specify the code for that option. When finished, you will have an assembly number such as **F10**. This number, for example identifies a:

- F** - Flowmeter
- 1** - DISS-1240 Solid Cover Outlet
- 0** - Cover Position on Centerline
- \_** - Color Option (if none use default)

Now move to the flow cartridge. Following the same procedure will produce an assembly number such as **2E0P6**. This number, for example identifies a:

- 2** - Small Diameter Knurled Knob
- E** - Window @ 0 degree radial & Ohio Style Oxygen Inlet @ 180 degree radial
- 0** - No Flow Cartridge Options
- \_** - Color Option (if none use default)
- P6** - 0 thru 25 LPM flow range (see B-Flowmeter (xxxx-xx-xx).docx.pdf) for selection of standard flow ranges)

Combining the two assembly numbers will provide a complete flowmeter part number such as **F10-2E0P6**.



FLOW RANGE:  
See B-Flows  
chart for part  
number and  
list price

COLOR OPTION:

- NONE - Green Anodized Body
- 1 - Lt Blue Anodized Body
- 2 - Silver Anodized Body
- 4 - Yellow Anodized Body
- 5 - Blue Anodized Body
- 6 - Red Anodized Body
- 7 - Brown Anodized Body
- 8 - Gold Anodized Body
- 9 - Black Anodized Body
- A - Purple Anodized Body
- B - Orange Anodized Body
- G - Gold Plated Brass Body (No Aluminum)
- T - Tri-Metal Plated Brass Body (No Aluminum)

FLOW CARTRIDGE OPTIONS:

- 0 - No Flow Cartridge Options, 50 PSI Inlet Pressure
- 2 - 2 Position (pinned, 2 positions available)
- 4 - 4 Position (pinned, 4 positions available)
- 7 - 7 Position (pinned, 7 positions available)
- 8 - 8 Position (pinned, 8 positions available)
- A - 20 PSI Inlet Pressure
- B - Female Ohio Oxygen Check Valve Tee Port
- C - Clear Anodized Knob
- D - 30 PSI Inlet Pressure
- E - DISS-1240 Check Valve Tee Port
- F - 4 Bar (58 PSI) Inlet Pressure
- G - DISS-1160 Check Valve Tee Port
- H - 24 PSI Inlet Pressure
- J - Long Flow Side Connector
- K - DISS-1240 Check Valve Tee Port Long
- L - DISS-1160 Check Valve Tee Port Long
- M - 10 PSI Inlet Pressure
- Q - 116 PSI Inlet Pressure (8 bar)
- S - Stainless Steel Body
- V - 17 PSI Inlet Pressure
- Y - Male Hansen Check Valve Tee Port
- Z - High Flow @ 70 PSI Inlet Pressure

FOR KNOB OPTIONS: 1, 2, 3, 4, 5, 7 and 8

FOR KNOB OPTIONS: A, B, C, D, E, F and G

WINDOW & CONTROLLED FLOW OUTLET POSITIONS:

- 0 - Window @ 0 & Hose Barb @ 180
- 1 - Window @ 0 & DISS-1240 Fitting @ 180
- 2 - Window @ 0 & 1/8" Female Pipe Port (Oxygen) @ 180
- 3 - Window @ 0 & DISS-1240 Fitting @ 180 w/ 45 adapter
- 4 - Window @ 270 & Hose Barb @ 180
- 5 - Window @ 270 & DISS-1240 Fitting @ 180
- 6 - Window @ 270 & 1/8" Female Pipe Port @ 180
- 7 - Window @ 180 & Hose Barb @ 180
- 8 - Window @ 90 & Hose Barb @ 180
- 9 - Window @ 90 & DISS-1240 Fitting @ 180
- A - Window @ 90 & 1/8" Female Pipe Port @ 180
- B - Window @ 0 & Australian Female SIS for (Oxygen) @ 180
- C - Window @ 0 & DISS-1240 Nipple & Swivel Nut Inlet @ 180
- D - Window @ 0 & Ohio Style (Medical Air) Inlet @ 180
- E - Window @ 0 & Ohio Style (Oxygen) Inlet @ 180
- F - Window @ 0 & Chemetron Style (Medical Air) Inlet @ 180
- G - Window @ 0 & Chemetron Style (Oxygen) Inlet @ 180
- H - Window @ 0 & Clear Hose Barb Outlet @ 180
- J - Window @ 0 & Long Ohio Style (Oxygen) Inlet @ 180
- K - Window @ 0 & 1/8" Female BSPP @ 180
- L - Window @ 0 & DISS-1160 Nipple & Swivel Nut Inlet @ 180
- M - Window @ 0 & 1/8" Female Pipe Port (Medical Air) @ 180
- N - Window @ 90 & Chemetron Style (Oxygen) Inlet @ 180
- P - Window @ 0 & Puritan Bennett (Oxygen) Inlet @ 180
- Q - Window @ 0 & Oxequip Twist (Oxygen) Inlet @ 180
- R - Window @ 0 & BS5682 Probe (Oxygen) Inlet w/filter @ 180
- S - Window @ 90 & DISS-1240 Nipple & Swivel Nut Inlet @ 180
- T - Window @ 180 & DISS-1240 Fitting @ 180
- U - Window @ 270 & DISS-1240 Fitting @ 180 w/ 90 adapter
- V - Window @ 0 & Hose Barb @ 180 w/ 45 adapter
- W - Window @ 0 & Australian Female SIS for (Medical Air) @ 180
- X - Window @ 180 & 1/8" Female Pipe Port @ 180
- Y - Window @ 270 & DISS-1240 Nipple & Swivel Nut Inlet @ 180
- Z - Window @ 180 & DISS-1240 Fitting @ 180 w/ 90 adapter

WINDOW & CONTROLLED FLOW OUTLET POSITIONS:

- 1 - Window @ 0 & Schrader Style (Oxygen) Inlet @ 180
- 2 - Window @ 0 & Medstar Style (Oxygen) Inlet @ 180
- 3 - Window @ 0 & Puritan Style (Medical Air) Inlet @ 180
- 4 - Window @ 0 & Schrader Style (Medical Air) Inlet @ 180
- 5 - Window @ 0 & Oxyquip Style (Medical Air) Inlet @ 180
- 6 - Window @ 0 & Medstar Style Medical Air Inlet @ 180
- 7 - Window @ 0 & DISS-1240 Nipple & Hexl Nut Inlet @ 180
- 8 - Window @ 0 & DISS-1160 Nipple & Hexl Nut Inlet @ 180
- 9 - Window @ 0 & French Female AFNOR (Oxygen) @ 180
- A - Window @ 0 & French Female AFNOR (Medical Air) @ 180
- B - Window @ 0 & DISS-1180 Nipple & Hex Nut Inlet @ 180
- C - Window @ 0 & German Male (DIN) (Oxygen) @ 180
- D - Window @ 60 & 1/8" Female Pipe Port (Oxygen) @ 180
- E - Window @ 300 & 1/8" Female Pipe Port (Oxygen) @ 180
- F - Window @ 270 & Ohio Style (Oxygen) Inlet @ 180
- N - Window @ 270 & DISS-1240 Fitting w/ HBD2 (Green)

FLOW CARTRIDGE CONFIGURATION:

- 1 - Tang Knob (discontinued)
- 2 - Large Diameter Knurled Knob
- 3 - Small Diameter Knurled Knob
- 4 - Double Window Large Knurled Knob
- 5 - Shrouded Knob (discontinued)
- 7 - Large Diameter Knurled Knob (InGage Body) (discontinued)
- 8 - Shrouded Knob (InGage Body) (discontinued)
- 9 - Large Window Large Knurled Knob
- 6 - Cap
- A - Tang Knob (discontinued)
- B - Large Diameter Knurled Knob
- C - Small Diameter Knurled Knob
- D - Double Window Large Knurled Knob
- E - Shrouded Knob (discontinued)
- F - Large Diameter Knurled Knob (InGage Body) (discontinued)
- G - Shrouded Knob (InGage Body) (discontinued)
- H - Large Window Large Knurled Knob

COLOR OPTION:

- NONE - Green Anodized Body
- 1 - Lt Blue Anodized Body
- 2 - Silver Anodized Body
- 4 - Yellow Anodized Body
- 5 - Blue Anodized Body
- 6 - Red Anodized Body
- 7 - Brown Anodized Body
- 8 - Gold Anodized Body
- 9 - Black Anodized Body
- A - Purple Anodized Body
- B - Orange Anodized Body
- G - Gold Plated Brass Body (No Aluminum)
- T - Tri-Metal Plated Brass Body (No Aluminum)

COVER POSITION:

- 0 - Cover Position on Centerline
- 1 - Cover Position on Centerline with 2 Ports
- 2 - Cover Position on 0 Radial
- 3 - Cover Position on 90 Radial
- 6 - Cover Position on 180 Radial
- 9 - Cover Position on 270 Radial
- E - Cover Position on 0 Radial w/ DISS-1240 Check Valve Tee Port
- K - Cover Position on 0 Radial w/ DISS-1240 Check Valve on Centerline
- S - Stainless Steel Body, Cover Position on Centerline

COVER CONNECTIONS:

- 0 - Hose Barb Fitting
- 1 - DISS-1240 Solid Cover Outlet
- 2 - 1/8" Female Pipe Port Cover
- 3 - 1/4" Female Pipe Port Cover
- 4 - No Cover (1-1/16"-20 UN)
- 5 - DISS-1240 Nipple & Swivel Nut Inlet Cover
- 6 - Ohio Style Medical Air Inlet Cover
- 7 - Ohio Style Oxygen Inlet Cover
- 8 - Chemetron Style Medical Air Inlet Cover
- 9 - Chemetron Style Oxygen Inlet Cover
- A - DISS-1160 Fitting
- B - DISS-1240 Fitting

- C - DISS-1080 Fitting
- D - 1/8" Solid Male Pipe Cover
- E - DISS-1240 Solid Cover w/ HDB24 (Yellow)
- F - Hose Barb & 22mm Tube Solid Cover Outlet
- G - Australian Male SIS for Oxygen
- H - DISS-1060 Fitting
- J - Hose Barb Solid Cover Outlet
- K - DISS-1240 Nipple & Swivel Nut
- N - DISS-1240 Solid Cover w/ HBD2 (Green)
- T - DISS-1120 Fitting
- W - Australian Male SIS for Medical Air

PRODUCT GROUP:

- F - Flowmeter