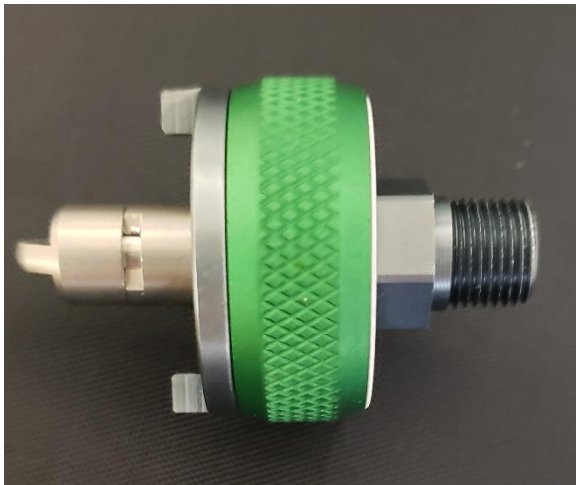


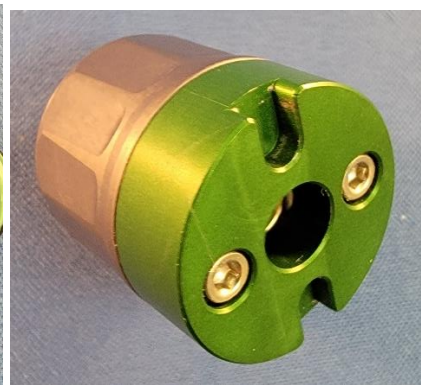
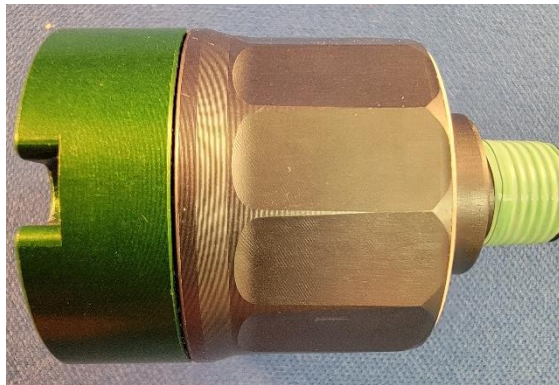


Ohio Style Quick Disconnect

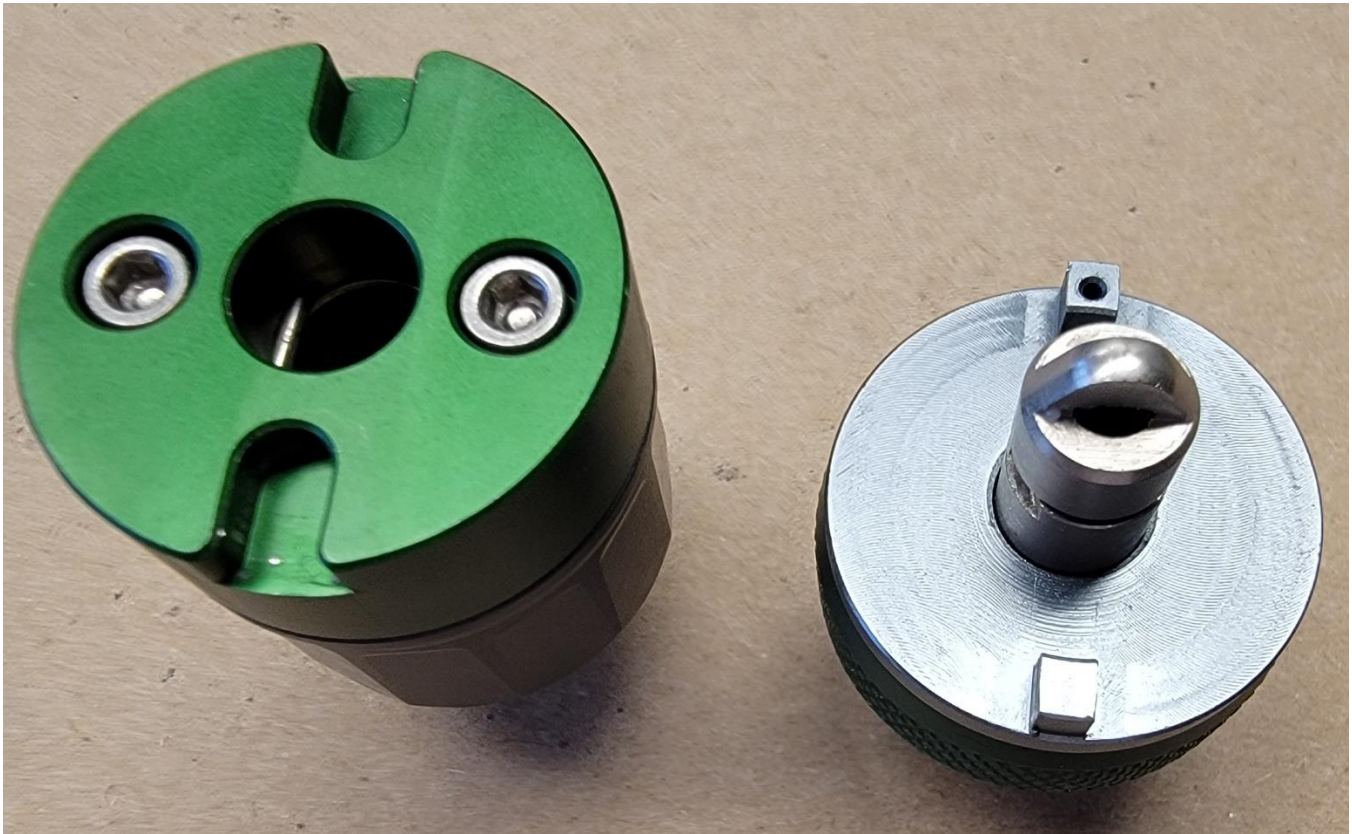
Flotec's Ohio (Ohmeda) Style Female and Male Quick Disconnects. Machined, assembled and tested in Indianapolis, Indiana.




QDO1-12 Male Ohio QD with Male 1/8" MNPT



QDO2-12 Female Ohio QD with Male 1/8" MNPT



Ohio (Ohmeda) Style Male Quick Disconnects

	Description	Size & Type	Part Number
	Quick Disconnect Male FloHio (Flotec) 1/8" Male NPT	Medical Air Oxygen Vacuum (Suction)	QDA1-12 QDO1-12 QDJ1-12
	Quick Disconnect Male FloHio (Flotec) 1/4" Male NPT	Medical Air Oxygen Vacuum (Suction)	QDA1-14 QDO1-14 QDJ1-14
	Quick Disconnect Male Ohio (Ohmeda) 1/8" Male NPT	Carbon Dioxide Medical Air Medical Air (ISO Black/White) Nitrous Oxide Oxygen Oxygen (ISO White) Vacuum (Suction) Vacuum (Suction) (ISO Yellow) WAGD (Evacuation)	QDY1-12 QDA1-12 QDA1B-12 QDH1-12 QDO1-12 QDO1W-12 QDJ1-12 QDJ1Y-12 QDF1-12
	Quick Disconnect Male Ohio (Ohmeda) 1/4" Male NPT	Carbon Dioxide Medical Air Nitrous Oxide Oxygen Vacuum (Suction) WAGD (Evacuation)	QDY1-14 QDA1-14 QDH1-14 QDO1-14 QDJ1-14 QDF1-14
	Quick Disconnect Male Ohio (Ohmeda) 1/8" Female NPT	Carbon Dioxide Medical Air Medical Air (ISO Black/White) Nitrous Oxide Oxygen Oxygen (ISO White) Vacuum (Suction) Vacuum (Suction) (ISO Yellow) WAGD (Evacuation)	QDY1-22 QDA1-22 QDA1B-22 QDH1-22 QDO1-22 QDO1W-22 QDJ1-22 QDJ1Y-22 QDF1-22
	Quick Disconnect Male Ohio (Ohmeda) Male DISS Check Valve	Carbon Dioxide Medical Air Nitrous Oxide Oxygen Vacuum (Suction) WAGD (Evacuation)	QDY1-DCV1080 QDA1-DCV1160 QDH1-DCV1040 QDO1-DCV1240 QDJ1-DCV1220 QDF1-DCV2220

Ohio (Ohmeda) Style Male Quick Disconnects (continued)

	Description	Size & Type	Part Number
	Quick Disconnect Male Ohio (Ohmeda) Male DISS Fitting	Carbon Dioxide Medical Air Nitrous Oxide Oxygen Vacuum (Suction) WAGD (Evacuation)	QDY1-DF1080 QDA1-DF1160 QDH1-DF1040 QDO1-DF1240 QDJ1-DF1220 QDF1-DF-2220
	Quick Disconnect Male Ohio (Ohmeda) 1/4" I.D. Hose Barb	Carbon Dioxide Medical Air Medical Air (ISO Black/White) Nitrous Oxide Oxygen Oxygen (ISO White) Vacuum (Suction) Vacuum (Suction) (ISO Yellow) WAGD (Evacuation)	QDY1-HB-4 QDA1-HB-4 QDA1B-HB-4 QDH1-HB-4 QDO1-HB-4 QDO1W-HB-4 QDJ1-HB-4 QDJ1Y-HB-4 QDF1-HB-4
	Quick Disconnect Male Ohio (Ohmeda) 5/16" I.D. Hose Barb	Vacuum (Suction) Vacuum (Suction) (ISO Yellow) WAGD (Evacuation)	QDJ1-HB-5 QDJ1Y-HB-5 QDF1-HB-5
	Quick Disconnect Male Ohio (Ohmeda) Female DISS Hex Nut	Carbon Dioxide Medical Air Nitrous Oxide Oxygen Vacuum (Suction) WAGD (Evacuation)	QDY1-HN1080 QDA1-HN1160 QDH1-HN1040 QDO1-HN1240 QDJ1-HN1220 QDF1-HN2220
	Quick Disconnect Male Ohio (Ohmeda) Female DISS Hand-Tight	Carbon Dioxide Medical Air Nitrous Oxide Oxygen Vacuum (Suction) WAGD (Evacuation)	QDY1-KN1080 QDA1-KN1160 QDH1-KN1040 QDO1-KN1240 QDJ1-KN1220 QDF1-KN2220

Ohio (Ohmeda) Style Female Quick Disconnects

	Description	Size & Type	Part Number
	Quick Disconnect Female Ohio (Ohmeda) 1/8" Male NPT	Carbon Dioxide Medical Air Nitrous Oxide Oxygen Vacuum (Suction) WAGD (Evacuation)	QDY2-12 QDA2-12 QDH2-12 QDO2-12 QDJ2-12 QDF2-12
	Quick Disconnect Female Ohio (Ohmeda) 1/4" Male NPT	Carbon Dioxide Medical Air Nitrous Oxide Oxygen Oxygen (ISO White) Vacuum (Suction) WAGD (Evacuation)	QDY2-14 QDA2-14 QDH2-14 QDO2-14 QDO2W-14 QDJ2-14 QDF2-14
	Quick Disconnect Female Ohio (Ohmeda) 1/8" FNPT	Carbon Dioxide Medical Air Nitrous Oxide Oxygen Vacuum (Suction) WAGD (Evacuation)	QDY2-22 QDA2-22 QDH2-22 QDO2-22 QDJ2-22 QDF2-22
	Quick Disconnect Female Ohio (Ohmeda) Male DISS Fitting	Carbon Dioxide Medical Air Nitrous Oxide Oxygen Vacuum (Suction) WAGD (Evacuation)	QDY2-DF1080 QDA2-DF1160 QDH2-DF1040 QDO2-DF1240 QDJ2-DF1220 QDF2-DF2220
	Quick Disconnect Female Ohio (Ohmeda) 1/4" I.D. Hose Barb	Carbon Dioxide Medical Air Nitrous Oxide Oxygen Vacuum (Suction) WAGD (Evacuation)	QDY2-HB-4 QDA2-HB-4 QDH2-HB-4 QDO2-HB-4 QDJ2-HB-4 QDF2-HB-4
	Quick Disconnect Female Ohio (Ohmeda) 5/16" I.D. Hose Barb	Vacuum (Suction) WAGD (Evacuation)	QDJ2-HB-5 QDF2-HB-5

Ohio (Ohmeda) Style Female Quick Disconnects (continued)

	Description	Size & Type	Part Number
	Quick Disconnect Female Ohio (Ohmeda) Female DISS Hex Nut	Carbon Dioxide Medical Air Nitrous Oxide Oxygen Vacuum (Suction) WAGD (Evacuation)	QDY2-HN1080 QDA2-HN1160 QDH2-HN1040 QDO2-HN1240 QDJ2-HN1220 QDF2-HN2220
	Quick Disconnect Female Ohio (Ohmeda) Female DISS Hand-Tight	Carbon Dioxide Medical Air Nitrous Oxide Oxygen Vacuum (Suction) WAGD (Evacuation)	QDY2-KN1080 QDA2-KN1160 QDH2-KN1040 QDO2-KN1240 QDJ2-KN1220 QDF2-KN2220

Specifications:

- Oxygen Clean, Meets Compressed Gas Association, Inc. G-4.1
3/8" Female NPT Pipe Ports
- 6061 Aluminum Construction with 302 Stainless Steel Spring, Fluorocarbon Rubber and Teflon Seals, other Elastomeric Seals available on request
Pressure Rating 200 psi