

## Flopac Replacement Parts List and Core Exchange Program

Easy replacement of external component parts and assembly modules

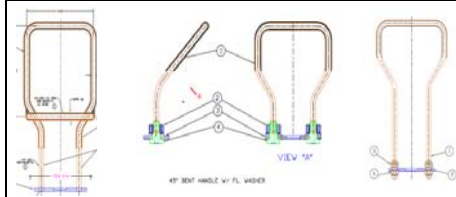
Part Number	Description	Pricing	Core Credit Amount
415-0001-001	1.25" External Hex Pressure Gauge (3000psi)	\$ 10.18	
415-0002-001	1.25" External Hex Pressure Gauge (4000psi)	\$ 10.18	
030-1000-001	External Gauge Conversion Installation Kit. Includes: Pressure Gauge, Adapter Ring, and O-Ring Seals	\$ 16.50	
210-6022-214	Large Groove Connector O-Ring	\$ 0.45	
210-6020-120	Small Groove Connector O-Ring	\$ 0.45	
010-6258-012-RM	Halo Welded Handle Assy. for Aluminum Cylinder	\$ 18.50	\$ 9.00
010-6264-001-RM	45° Angled Handle Assy. for Aluminum Cylinder	\$ 15.00	\$ 7.00
010-6247-001-RM	Straight Adapter Style Handle Assy. for Al Cylinder	\$ 12.00	\$ 4.00
HB12-RM	Hose Barb Green	\$ 5.00	
HB124-RM	Hose Barb Yellow	\$ 5.00	
DCV-1240-RM	DISS-1240 50psi Check Valve Outlet	\$ 9.80	
DF-1240-RM	DISS-1240 Outlet Fitting	\$ 4.31	
DCV-1160-RM	DISS-1160 50psi Check-Valve Outlet	\$ 14.30	
DF-1160-RM	DISS-1160 Outlet Fitting	\$ 8.77	
003-3000-452-RM	CGA-540 Fill Port Assembly	\$ 27.50	\$ 14.00
003-3000-455-RM	CGA-346 Fill Port Assembly	\$ 32.38	\$ 16.20
010-6246-002-RM	Shutoff Knob Assembly	\$ 21.50	\$ 10.50
010-6211-245-RM	Erie Style Burst Disc (Safety) Assembly 2015psi applications	\$ 3.85	
010-6211-048-RM	Sherwood Style Burst Disc (Safety) Assembly 3000psi applications	\$ 6.30	

\*\* Core part prices shown will be credited upon return receipt of used parts.

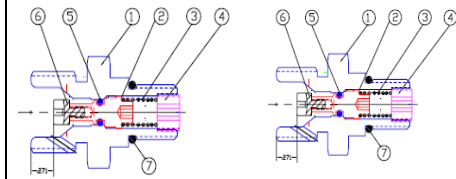
\*\* Returned parts / assemblies must not be damaged so as to prevent rebuild.



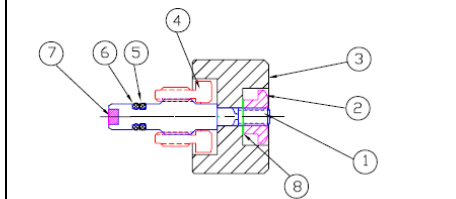
# Flopac Core Exchange Parts



Part Number 010-6258-012-RM Welded Halo Handle Assembly  
 Part Number 010-6264-001-RM 45° Angled Adapter Style Handle Assembly  
 Part Number 010-6247-001-RM Straight Handle Style (obsolete)



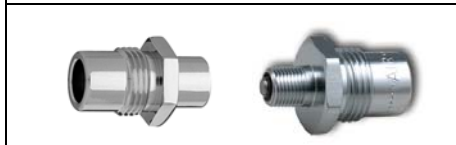
Part Number 003-3000-452-RM CGA-540 Oxygen Fill Port Assembly  
 Part Number 003-3000-455-RM CGA-346 Medical Air Fill Port Assembly



Part Number 010-6246-002-RM Shutoff Knob Assembly



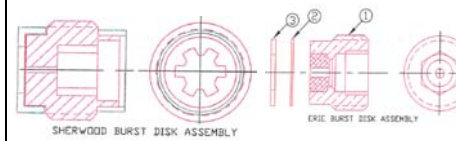
Part Number DCV-1240-RM DISS-1240 Oxygen 50psi Check Valve Outlet  
 Part Number DF-1240-RM DISS-1240 Oxygen Outlet Fitting



Part Number DCV-1160-RM DISS-1160 Medical Air 50psi Check Valve Outlet  
 Part Number DF-1160-RM DISS-1160 Medical Air Outlet Fitting

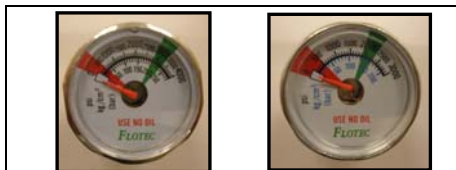


Part Number HB12-RM Hose Barb Green  
 Part Number HB124-RM Hose Barb Yellow



Part Number 010-6211-245-RM Erie Style (3-piece) Burst Disc (Safety) Assy  
 Part Number 010-6211-048-RM Sherwood Style Burst Disc (Safety) Assy  
 For 3000psi fill applications

# Flopac Replacement Parts



Part Number 415-0001-001 1.25" External Hex Pressure Gauge (3000psi)  
 Part Number 415-0002-001 1.25" External Hex Pressure Gauge (2000psi)