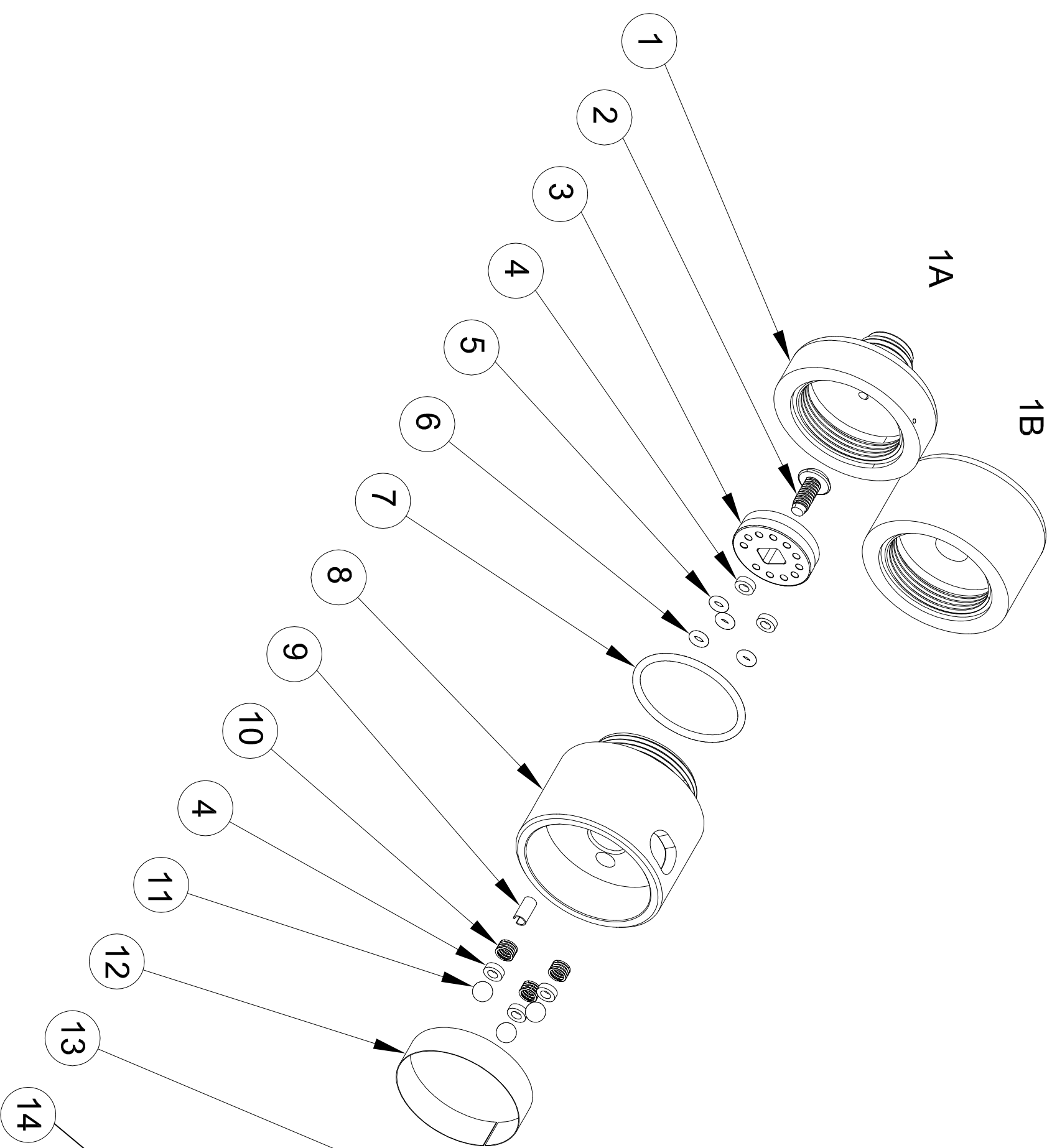


DATE	REV.	REVISION RECORD	ECN #	DR.	CHK.
01-11-18	A	RELEASE AND ISSUE	E17-00X	JW	



ITEM	QTY.	DWG. NUMBER	DESCRIPTION
14A or 14B or 14C	1	810-6481-203 or 810-6481-303 or 810-6481-103	LARGE KNURLED KNOB or SMALL KNURLED KNOB or TANG KNOB
13	1	210-6028-010	O-RING, SILICONE
12	1	810-6493-XXX	DECAL, SPECIFY FLOW RANGE
11	3	553-0001-003	DETENT BALL
10	3	151-0001-001	DETENT SPRING
9	1	112-2125-004	SPRING PIN
8	1	810-6480-X1X	FM BODY, SPECIFY WINDOW ANGULARITY
7	1	210-6022-022	O-RING, NEOPRENE
6	3	810-6562-001	O-RING, SILICONE
5	1	810-6562-V01	O-RING, VITON
4	5	810-6495-001	WASHER, FACE SEAL, PTFE
3	1	810-6483-XXX	ROTOR ASSEMBLY
2	1	109-4008-006	SCREW, THREAD LOCKING
1A or 1B	1	810-6532-XXX or 810-6508-10X	FM COVER 1/8" OR 1/4" FNPT OR FM COVER SOLID DISS 1240

TOLERANCES:
 ±.5° CHAMFERS, ETC.
 ±.1° OTHERWISE
 .005 A

CONFIDENTIAL
 © 2018 FLOTEC
 INDIANAPOLIS, IN USA
 ALL RIGHTS RESERVED

CAD #
 NAME
 FLOWMETER EXPLODED

CAD FILE # FM-EXPLODED-A

SHEET 1 OF 1

REF#
 DRAWING NUMBER
 FM-EXPLODED

REV. A