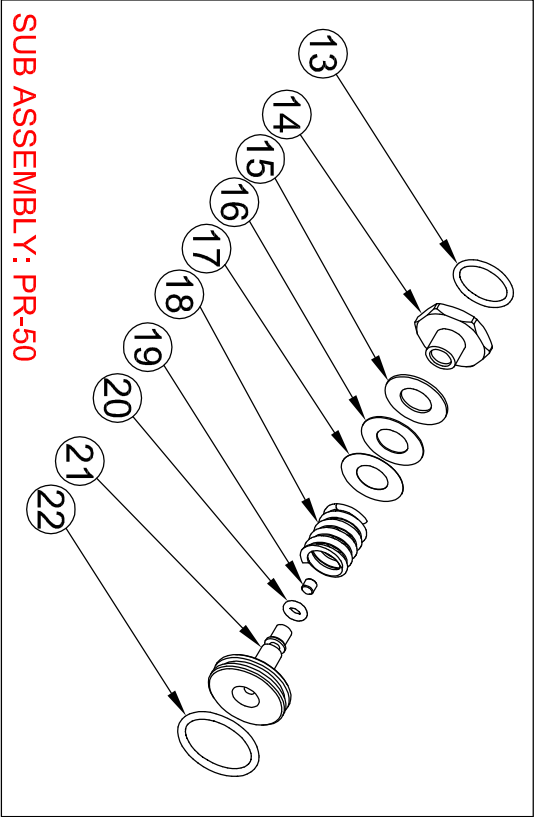
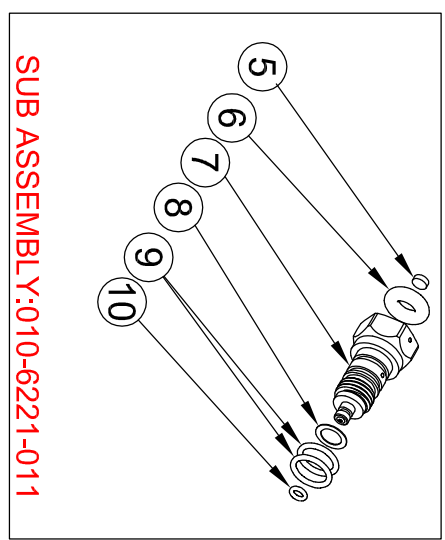


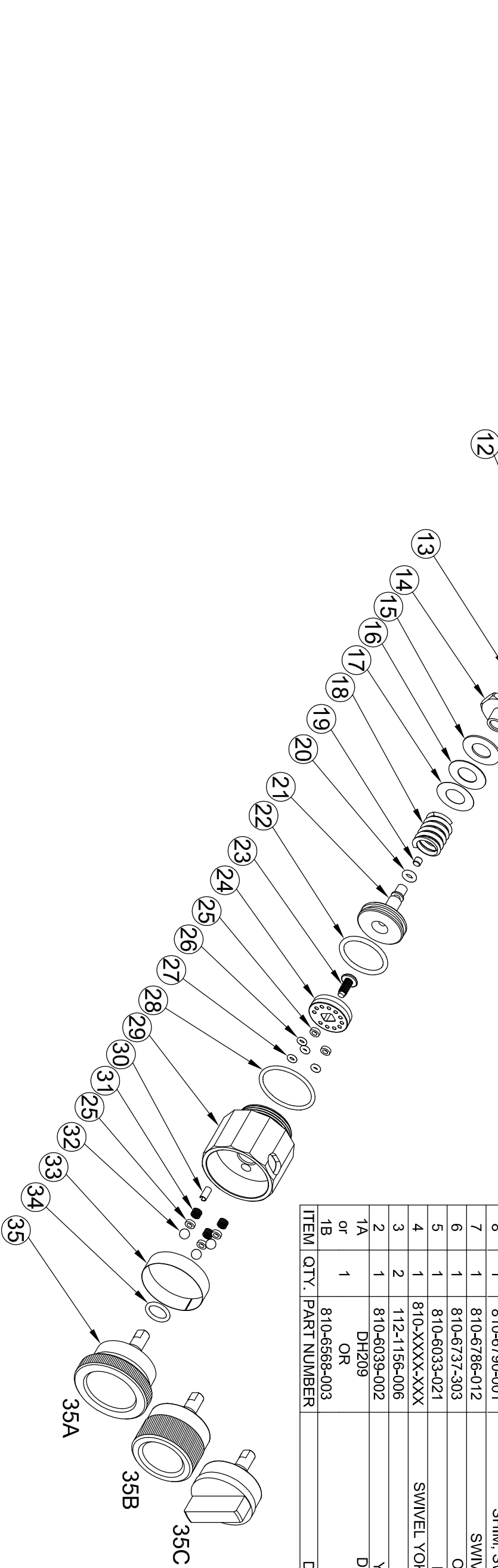
DATE	REV.	REVISION RECORD	ECN #	DR. CHK.
11-16-17	A	RELEASE AND ISSUE	E17-___	JW



SUB ASSEMBLY: PR-50



SUB ASSEMBLY: 010-6222-011



ITEM	QTY.	PART NUMBER	DESCRIPTION
35A or 35B or 35C	1	810-6481-203 or 810-6481-303 or 810-6481-103	LARGE KNURLED KNOB or SMALL KNURLED KNOB or TANG KNOB O-RING, SILICONE
34	1	210-6028-010	O-RING, SILICONE
33	1	810-6493-XXX	DECAL
32	3	553-0001-003	DETENT BALL
31	3	151-0001-001	DETENT SPRING
30	1	112-2125-004	SPRING PIN
29	1	810-6780-XXX	DL FLOWMETER BODY (SPECIFY WINDOW ANGLE)
28	1	210-6022-022	O-RING, NEOPRENE
27	3	810-6562-001	O-RING, SILICONE
26	1	810-6562-V01	O-RING, VITON
25	2	810-6495-001	WASHER, FACE SEAL, PTFE
24	1	810-6483-XXX	ROTOR ASSEMBLY (SPECIFY DESIRED FLOWS)
23	1	109-4008-006	SCREW, THREAD LOCKING
22	1	210-6028-019	O-RING, SILICONE
21	1	810-7052-101	PISTON
20	1	210-6028-006	O-RING, SILICONE
19	1	810-6236-001	SEAL, PISTON, TEFLON
18	1	810-XXXX-XXX	PR SPRING (SPECIFY PRESSURE)
17	1	810-6487-021	SHIM, PR .003 THICK
16	1	810-6404-001	SHIM, PR .015 THICK
15	1	810-6506-001	SHIM, PR .032 THICK
14	1	810-6622-011	MANIFOLD
13	1	210-6022-015	O-RING, NEOPRENE
12	1	810-6789-XXX	DL SWIVEL BODY (SPECIFY PORT ANGLES)
11	1	010-6222-001	INGAGE ASSEMBLY
10	1	810-6737-003	O-RING, VITON
9	2	810-6737-203	O-RING, VITON
8	1	810-6790-001	SHIM, SWIVEL YOKE, BRASS
7	1	810-6786-012	SWIVEL CONNECTOR
6	1	810-6737-303	O-RING, VITON
5	1	810-6033-021	FILTER DISK
4	1	810-XXXX-XXX	SWIVEL YOKE (SPECIFY GAS TYPE)
3	2	112-1156-006	DOWEL PIN
2	1	810-6039-002	YOKE INSERT
1A or 1B	1	DH209 OR 810-6568-003	DOVE HANDLE OR T-HANDLE

TOLERANCES:
 =±.5° CHAMFERS, ETC.
 =±.1° OTHERWISE

CONFIDENTIAL
 © 2017 FLOTEC
 INDIANAPOLIS, IN USA
 ALL RIGHTS RESERVED

FLOTEC

CAD #E CAD FILE # DR-EXPLODED-A NAME SHEET 1 OF 1 DRAWING NUMBER DR-EXPLODED REV. A

INDICATORS:
 .XX=±.01
 .XXX=±.005
 .XXXX=±.0005
 .005 A Ø.005 A